

City of Newark/Newark Unified



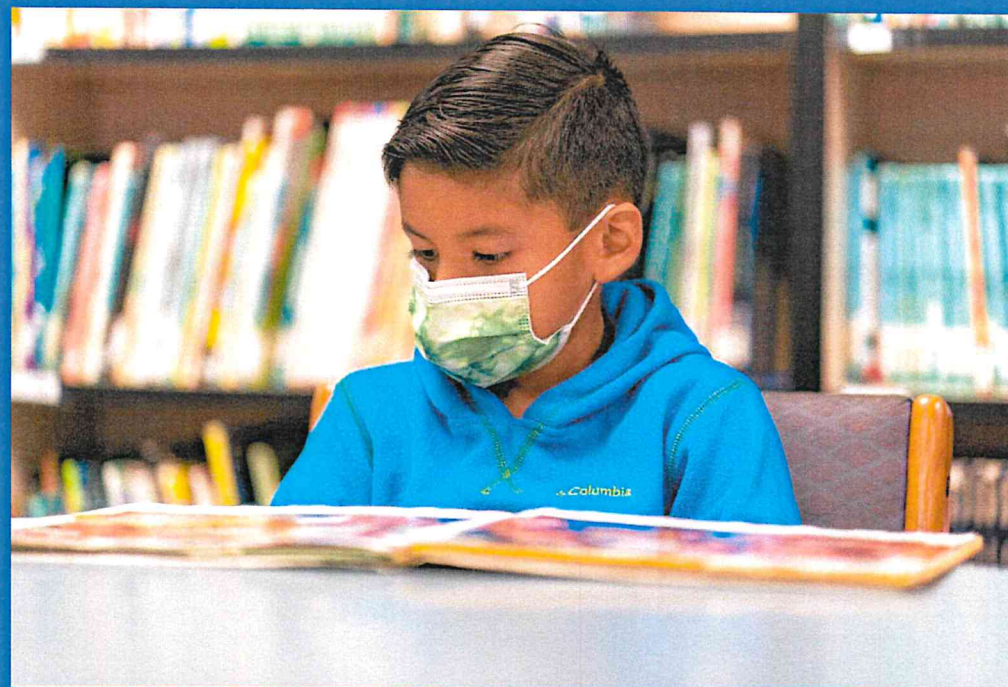
Liaison Committee Meeting, August 15, 2022

Instructional Priorities



Supporting Student Social-Emotional Learning and Wellness

- Increased opportunities for student voice
- Adopted new curriculum K-12: Character Strong
- Increased mental health services & learning for students and staff
- Coordination of Services Teams (COST) at every school



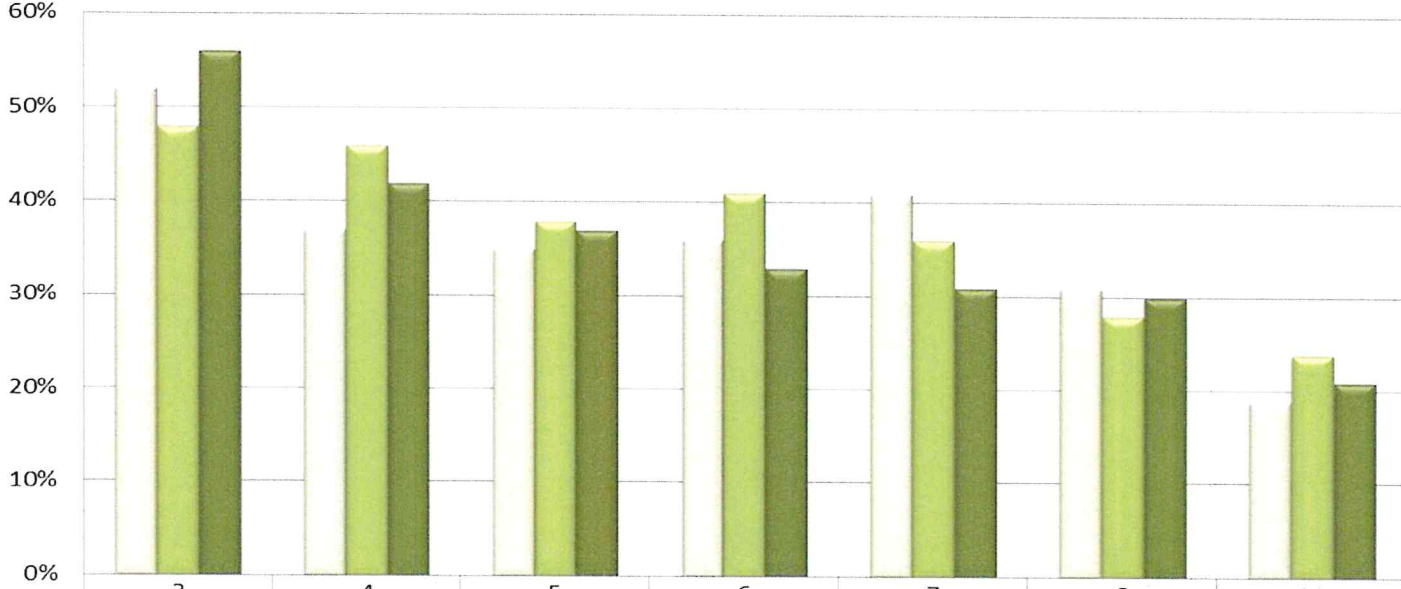
Supporting Students Academic Progress

- Academic intervention programs: PAWS, Academic Flex, Elementary Intervention
- Sobrato Early Academic Language Program (SEAL)
- STEAM Initiative
 - STAR Program
 - Environmental Literacy
- Adoption of new math progression
- Online instructional subscriptions



SBAC Math 3-Year Comparison (Preliminary)

**CAASPP Mathematics (Preliminary Data)
Met/Exceeded Standard
Over Time, by Grade Level**

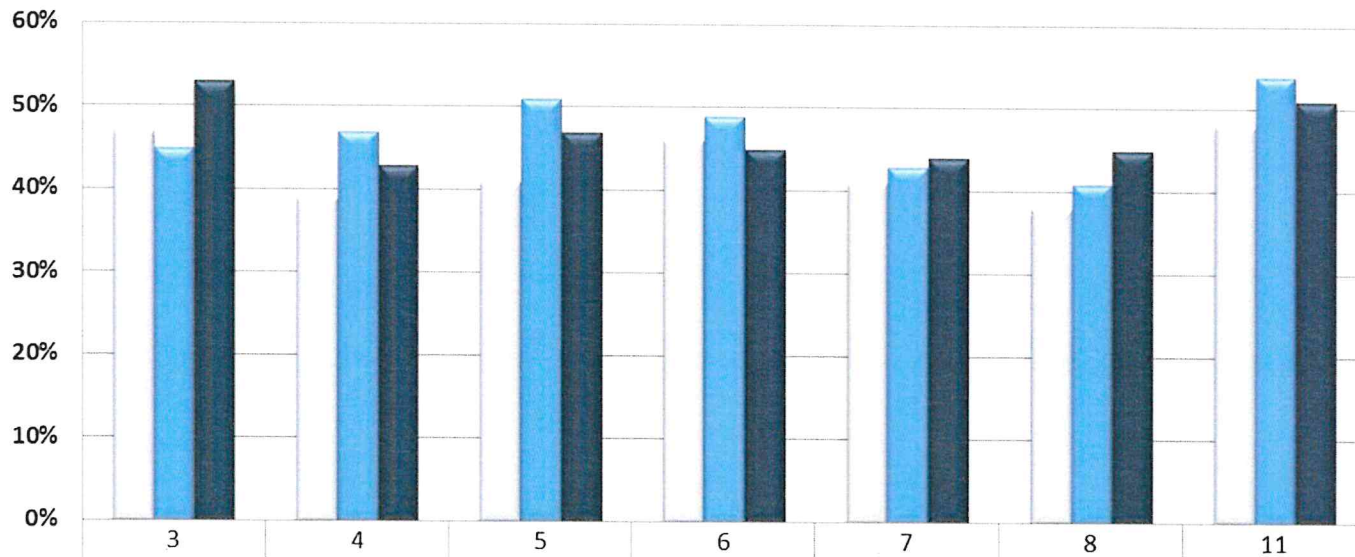


	3	4	5	6	7	8	11
2017-18	52%	37%	35%	36%	41%	31%	19%
2018-19	48%	46%	38%	41%	36%	28%	24%
2021-22	56%	42%	37%	33%	31%	30%	21%



SBAC ELA 3-Year Comparison (Preliminary)

**CAASPP ELA (Preliminary Data)
Met/Exceeded Standard
Over Time, by Grade Level**

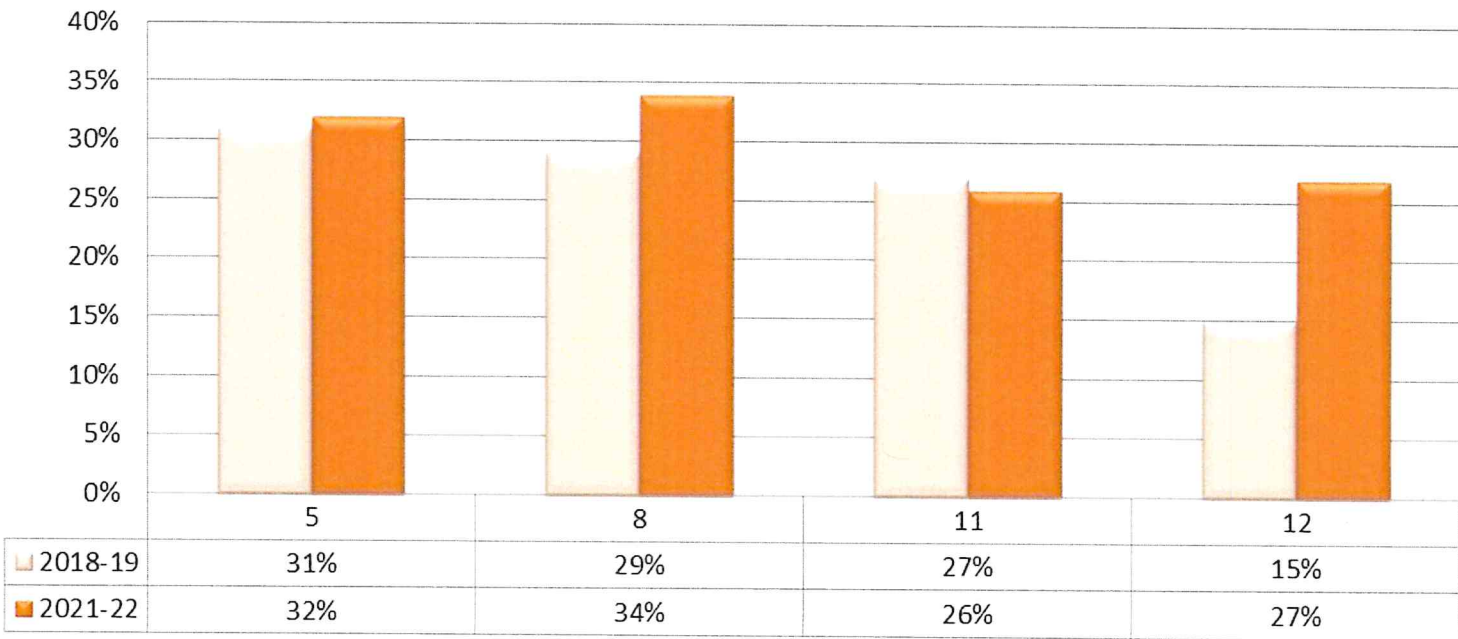


	3	4	5	6	7	8	11
2017-18	47%	39%	41%	46%	41%	38%	48%
2018-19	45%	47%	51%	49%	43%	41%	54%
2021-22	53%	43%	47%	45%	44%	45%	51%



CAST 2-Year Comparison (Preliminary)

**CA Science Test (Preliminary Data)
Met/Exceeded Standard
Over Time, by Grade Level**





Thank You!